

**EnAr Spy
Overview**

Version <1.0>

Table of contents

1	General Notes	3
1.1	Disclaimer	3
1.2	Requirements	3
2	EnAr Spy	4
2.1	Element Details	4
2.2	Execute SQL	5
2.3	Repository info.....	6
2.4	Disabled: ScriptPro.....	7
2.5	Coming up next: Remove Version Control.....	8
3	Additional tools in setup	9
3.1	eaCommand	9
3.2	eaCommand GUI	10
3.3	eaLauncher.....	11

1 General Notes

1.1 Disclaimer

Enterprise Architect Spy (= EnAr Spy) is a tool to support developers at work. It was created out of my own needs, and is far from being finished.

So please note, that I will not take any responsibility on possible data loss or damage to any software or hardware.

But good news is: This tool is free of charge.

If you have any suggestions concerning existing or future functionality, please feel free to contact me at:

andreas.bruckner@lieberlieber.com

1.2 Requirements

Minimum requirements are:

- Windows XP
- MS .NET 2.0
- Enterprise Architect 8

Please note, that Development startet with EA version like 7.68. So it might run on older versions than 8.0 also (if the interface-ids did not change). Give it a try.

2 EnAr Spy

The Spy will integrate into Enterprise Architect as a custom Addin. It's menu entries can be found in EA's mainMenu and contextMenu by

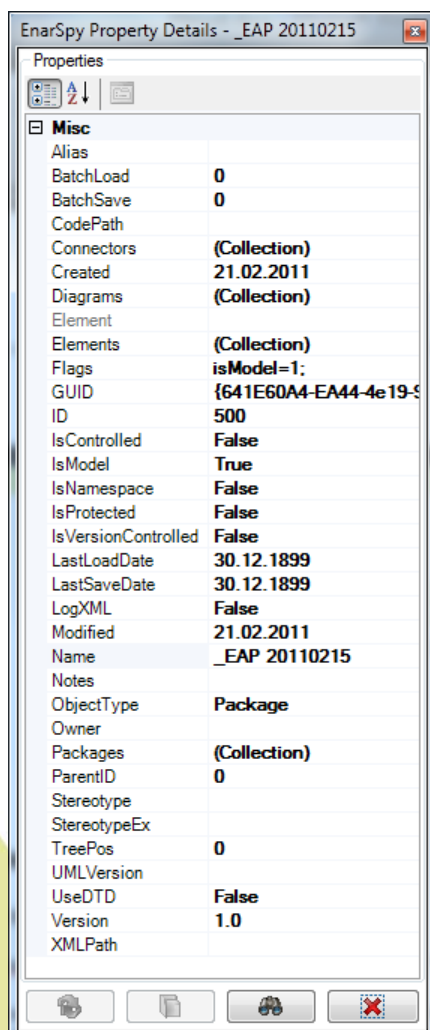
Add-In\EnarSpy

2.1 Element Details

Plugin displays the currently selected item's properties.

On collections only the first 2 levels are loaded. So you will see the element's Methods, but you cannot see the method's parameters. This is to speed up the dialog and avoid recursive loops.

Also this dialog is read-only. Changes on properties WILL NOT BE SAVED!



Right-click in Menutree or diagram and select "Element Details" for the properties-grid to show up.

Buttons on the bottom:

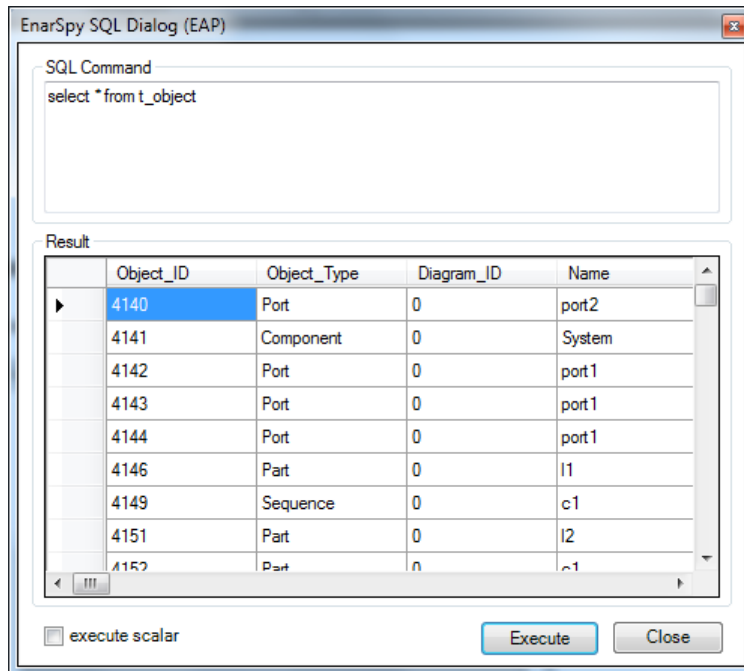
- Alternate object:
hit the "Alternate object" button on bottom of the properties-grid to switch between EA object and diagram object (only available, if started out of diagram)

- Fullpath:
display full path of current element

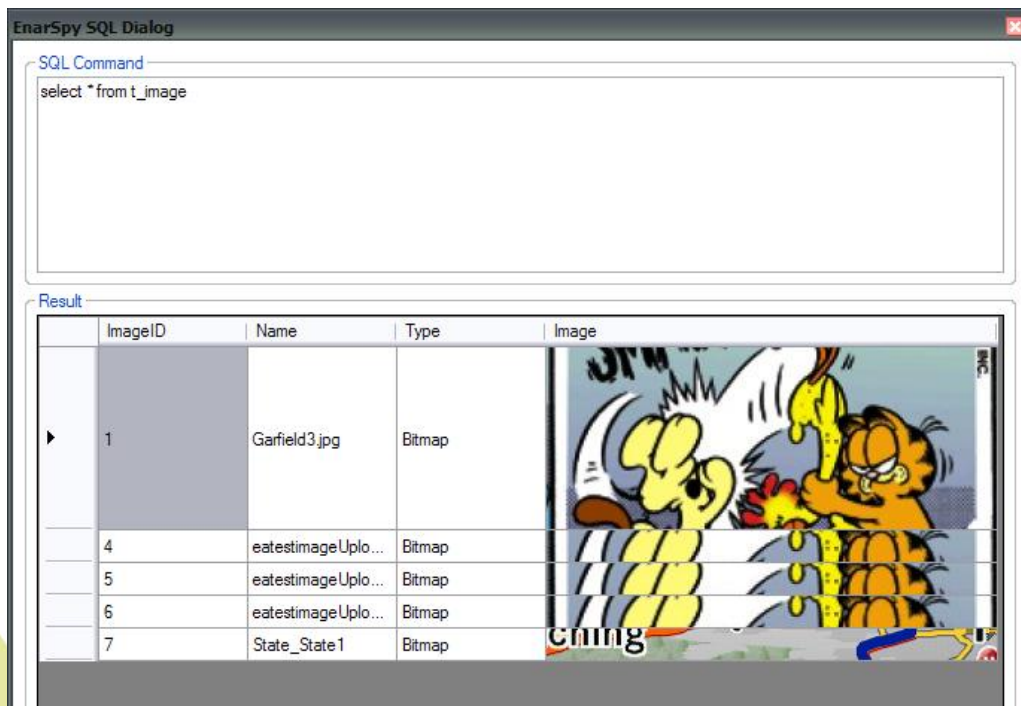
- Search Object:
search objects by PackageId, ElementId or ElementGuid

2.2 Execute SQL

Execute any SQL on the database, using the repository's connection.

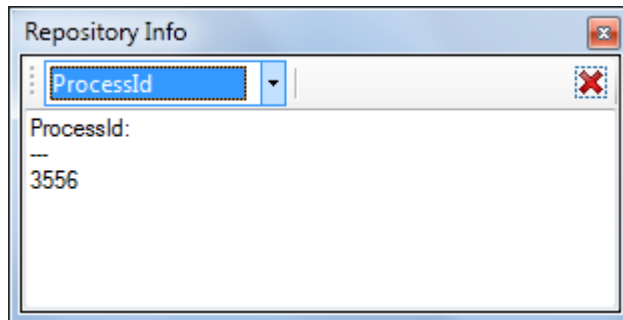


On SQL statements without returnValue, select "execute scalar" on bottom if the form.



2.3 Repository info

Get a couple of informations out of the current project's repository object.



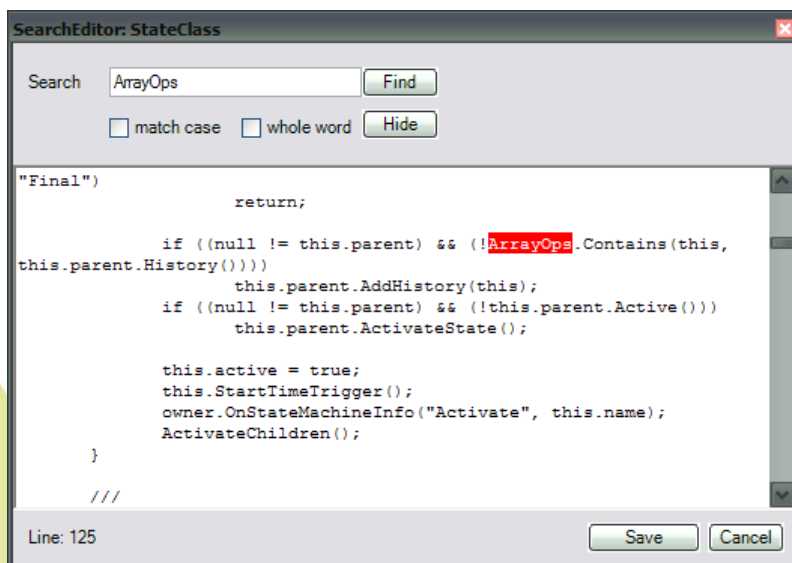
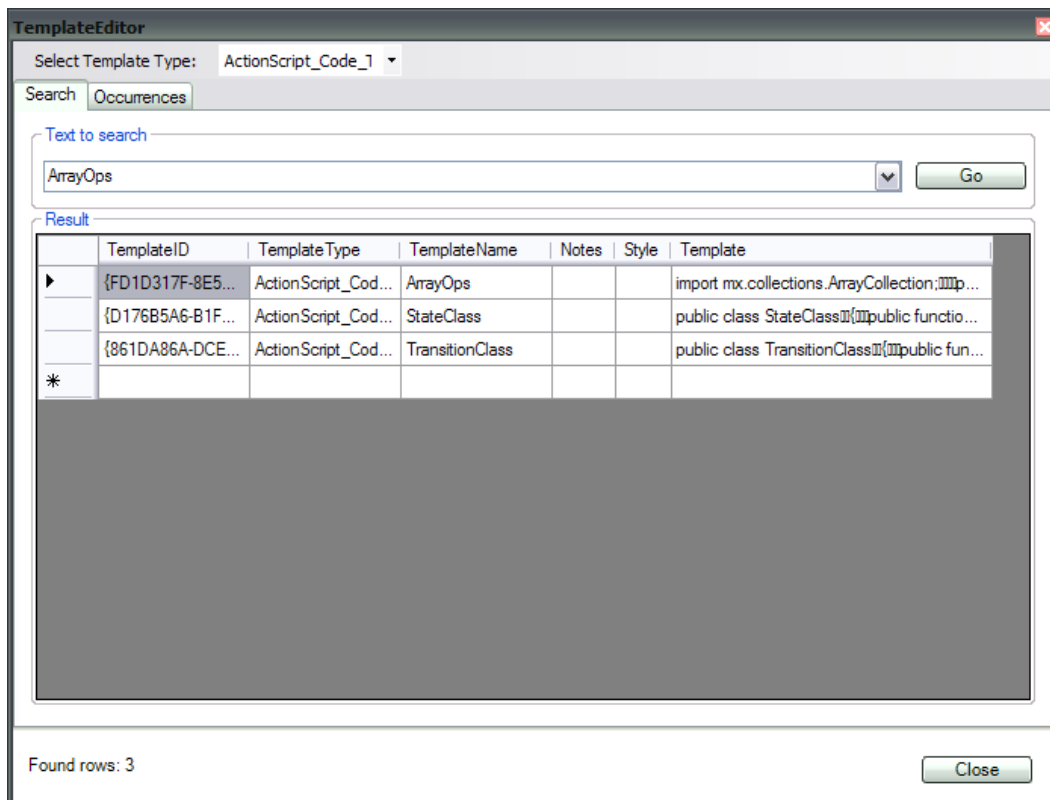
possible infos are:

- ConnectionString
- EA Edition
- ProcessID
- EA Edition
- IsSecurityEnabled

2.4 Disabled: ScriptPro

Is currently disabled. It allows you to search inside the Code Generation Templates for any text, and it also displays a list of files not references by any other file.

Current limitation is: only modified files are shown. I will re-enable this feature as soon as standard (and not modified) code template files are included.



2.5 Coming up next: Remove Version Control

I get a lot of customer's projects having version control enabled. It gets boring quickly to manually remove all the packages from version control manually, just to get rid of the warning message at project startup: "Version control not configured. You want to configure it now?"

This plugin is currently being tested, and might be released soon.

3 Additional tools in setup

These tools can also be found on <http://blog.lieberlieber.com>

3.1 eaCommand

Documentation of software projects

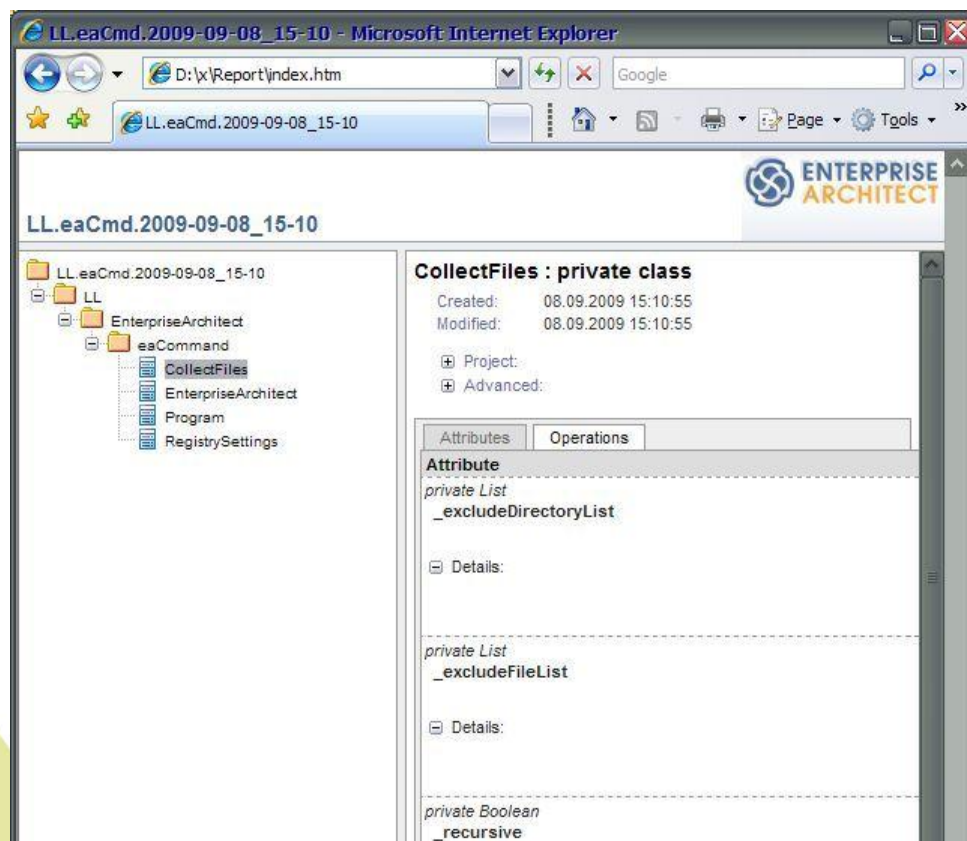
Documentation of existing software projects made easy by using Enterprise Architect. Whether the project exists as Source Code, .Net Assembly or .Java-Files.

Single files or whole directories can be imported into a (new) EA-Project via COM-Interface, and a HTML-Report is generated afterwards.

To ease things, LieberLieber has written a Commandline-Application to cover the whole workflow from importing files to generating the HTML-Report.

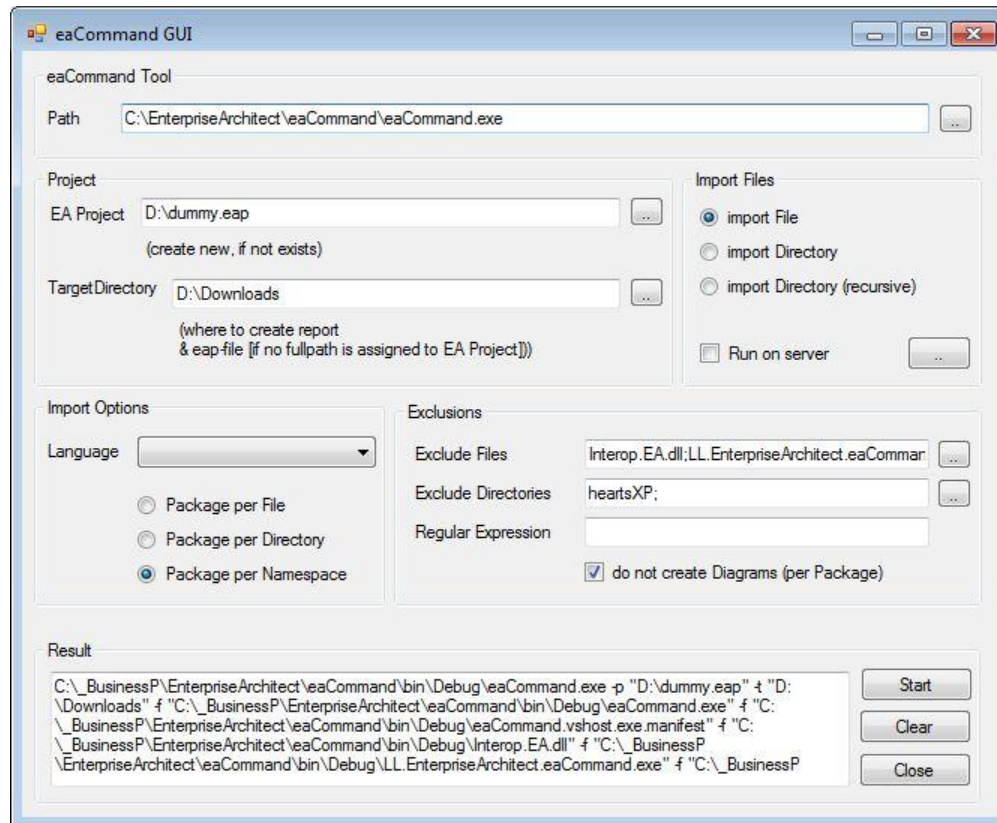
Only requirement is an installed version of Enterprise Architect on either a client or server machine.

See screenshot of the report after importing eaCommand-Assembly (C#) below:



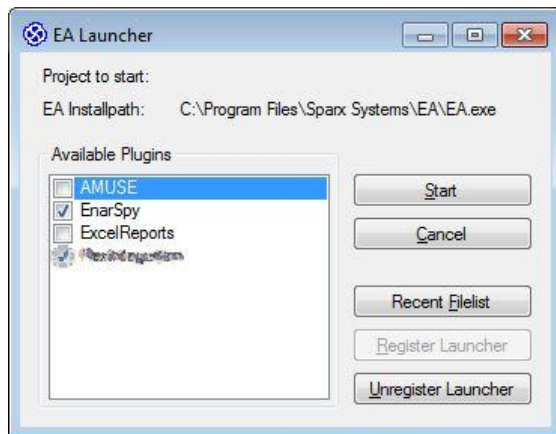
3.2 eaCommand GUI

Helps creating the command line arguments for eaCommand.



3.3 eaLauncher

If you have a couple of EA-Addins installed on your computer, and some of them interfere with others, you might want to disable some or all at project-startup.



This tool registers for EAP Fileextension and will popup, whenever a new EA-project is started.

To register for EAP: start eaLauncher, then click "Register Launcher" button.

To unregister: click "Unregister Launcher"

The "Recent Filelist" let's you edit the entries being displayed on EA startMenu

Have a nice day,

maybe you want to visit us at
<http://blog.lieberlieber.com>