



## **EnAr Spy Overview**

**Version <1.2>**

## Table of contents

1	General Notes .....	3
1.1	Disclaimer .....	3
1.2	Requirements .....	3
1.3	Side notes .....	3
1.4	Change Log .....	3
2	EnAr Spy .....	6
2.1	Element Details .....	6
2.2	Advanced Search .....	8
2.3	Execute SQL .....	9
2.4	Repository info.....	10
2.5	Filtergram.....	11
2.6	Disabled: ScriptPro.....	12
2.7	Traces .....	14
2.7.1	Remove version control .....	14
2.7.2	Reset Styles .....	14
2.8	Refresh .....	15
3	Additional tools in setup .....	16
3.1	eaCommand .....	16
3.2	eaCommand GUI .....	17
3.3	eaLauncher.....	18

# 1 General Notes

## 1.1 Disclaimer

Enterprise Architect Spy (= EnAr Spy) is a tool to support developers at work. It was created out of my own needs, and is far from being finished.

**So please note, that I will not take any responsibility on possible data loss or damage to any software or hardware.**

But good news is: This tool is free of charge.

If you have any suggestions concerning existing or future functionality, please feel free to contact me at:

[andreas.bruckner@lieberlieber.com](mailto:andreas.bruckner@lieberlieber.com)

## 1.2 Requirements

Minimum requirements are:

- Windows XP
- MS .NET 3.5
- Enterprise Architect 8

Please note, that Development started with EA version like 7.68. So it might run on older versions than 8.0 also (if the interface-ids did not change). Give it a try.

## 1.3 Side notes

Enar Spy does not register for any EA-Events, and may therefore not interfere with any other installed plugins.

## 1.4 Change Log

2011-09-20:

- [AdvancedSearch] search by type (except packages; they do not have types types for elements, diagrams, connectors are prefilled using Foundation.Types enumerations
- [ElementDetails] in property form title, display element name first, then '- EnarSpy Property Details'

- [Traces] in VersionControlRemove search for packages having IsControlled == -1 || +1 (only null or 0 means disabled)
- [SpyUtilities] override ToString function to display Short-Type and Name (if exists)
  
- 2011-09-06:
  - [ElementDetails] display tablerecord also for types method, connector, attribute, diagram
  - [ExecutesSQL] removed syntax highlighting due it was buggy
  
- 2011-08-30:
  - [All] updated IAHost components; sorting Context-Menu Entries (e.g. Element Details back on top)
  
- 2011-07-07:
  - [Refresh] refresh parts of the TreeView or the current Diagram (EA does just offer 'Reload current project')
  
- 2011-07-01:
  - [AdvancedSearch] implemented name-search changed code behind path-search; this will not parse the tree top-down, but search by name first, then match the path
  
- 2011-06-24:
  - [AdvancedSearch] implemented path-search (delimiters must be '.' or '\\') this is a 'best-match search'; it follows the path as far as it can.
  
- 2011-06-10:
  - [Refactoring] new plugin, containing old SequenceRefactoring and new SpreadStyle
  - [Refactoring] new submenu named "Spread Style" -> select connector or element on diagram and copy it's style to other objects
  
- 2011-06-07:
  - [Filtergram] bugfix: reset Diagram in Form Closing event (some people might close the dialog with the x-button in title)
  - [Traces] added menuitem to remove all styleInfos in currentDiagram
  - [AdvancedSearch] NEW !!! search model by Id and/or Guid. search for connectors, packages, elements, methods, attributes
  - [ExecutesSQL] added pseudo-syntaxhighlighting and intellisense for EA-table-names
  
- 2011-06-01:
  - [eaLauncher] now supports plugins installed to LocalMachine (=EA9.0)
  
- 2011-05-29:
  - [ElementDetails] NEW !!! contains now TableRecord form to display element's or package's database-record

reach it in ElementDetail's bottom toolbar

2011-05-05:

- [HyperbolicView] NEW !!!  
added open source hyperbolic view to display elements  
integrates as EA.Diagram object; case-study & not  
included in setup

2011-04-20:

- [Filtergram] NEW !!!  
highlight elements on diagram using filterCriteria
- [ElementDetails] outsourced Bridge to EAUtilities

2011-03-31:

- [ElementDetails] show full-path is now only in context menu.  
with the button in bottom toolbar user jumps to the  
selected item in treeView

2011-03-30:

- [SequenceRefactoring] added new project for refactoring  
sequence-diagram-fragments

2011-03-23:

- [ElementDetails] check if remembered form-popup-location is off-screen  
(occurs when user worked on 2 screens, and has only 1  
screen now)
- [ElementDetails] on show element every single collection is loaded till  
the end except packages and elements
- [ElementDetails] on open context menu, see if selected gridItem is  
packageID or parentID or clientID or ...  
and offer direct-jump to this element (without  
displaying the TypeSelector-Form)
- [VersionControl] renamed main-menu-entry to "Traces"
- [VersionControl] linked RecentFileList Form from Project eaLauncher to  
new sub-menu-entry "Edit recent file list"

## 2 EnAr Spy

The Spy will integrate into Enterprise Architect as a custom Addin. It's menu entries can be found in EA's Main Menu and Context Menu by

Add-In\EnarSpy

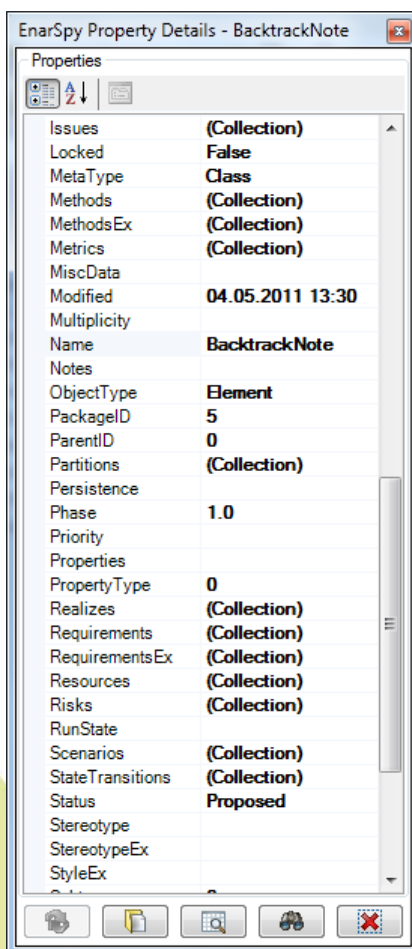
### 2.1 Element Details

Plugin displays the currently selected item's properties.

**NEW:** Every collection is now loaded in depth, except Elements and Packages Collections.

This is to speed up the dialog and avoid recursive loops.

Also this dialog is read-only. Changes on properties WILL NOT BE SAVED!



Right-click in TreeView or diagram and select "Element Details" for the properties-grid to show up.

Buttons on the bottom:

- Alternate object:  
hit the "Alternate object" button on bottom of the properties-grid to switch between EA object and diagram object (only available, if started out of diagram)
- Show in project view:  
Jump to element in TreeView
- Search Object:  
search objects by PackageId, ElementId or ElementGuid
- Show in project view  
set cursor to corresponding element in TreeView
- Show record in table  
display the database record itself. This supports all unencrypted OleDb-Connections and the .EAP files themselves.

There are more options in the propertyGrid's context menu.

Note: if you right-click the diagram without having any object selected, ElementDetails will load the Diagram itself.

Object_ID	Object_Type	Diagram_ID	Name	Alias
43	Class	0	BacktrackNote	

The function "Show record in table"

Currently it's read only, but some improvements are under construction yet.

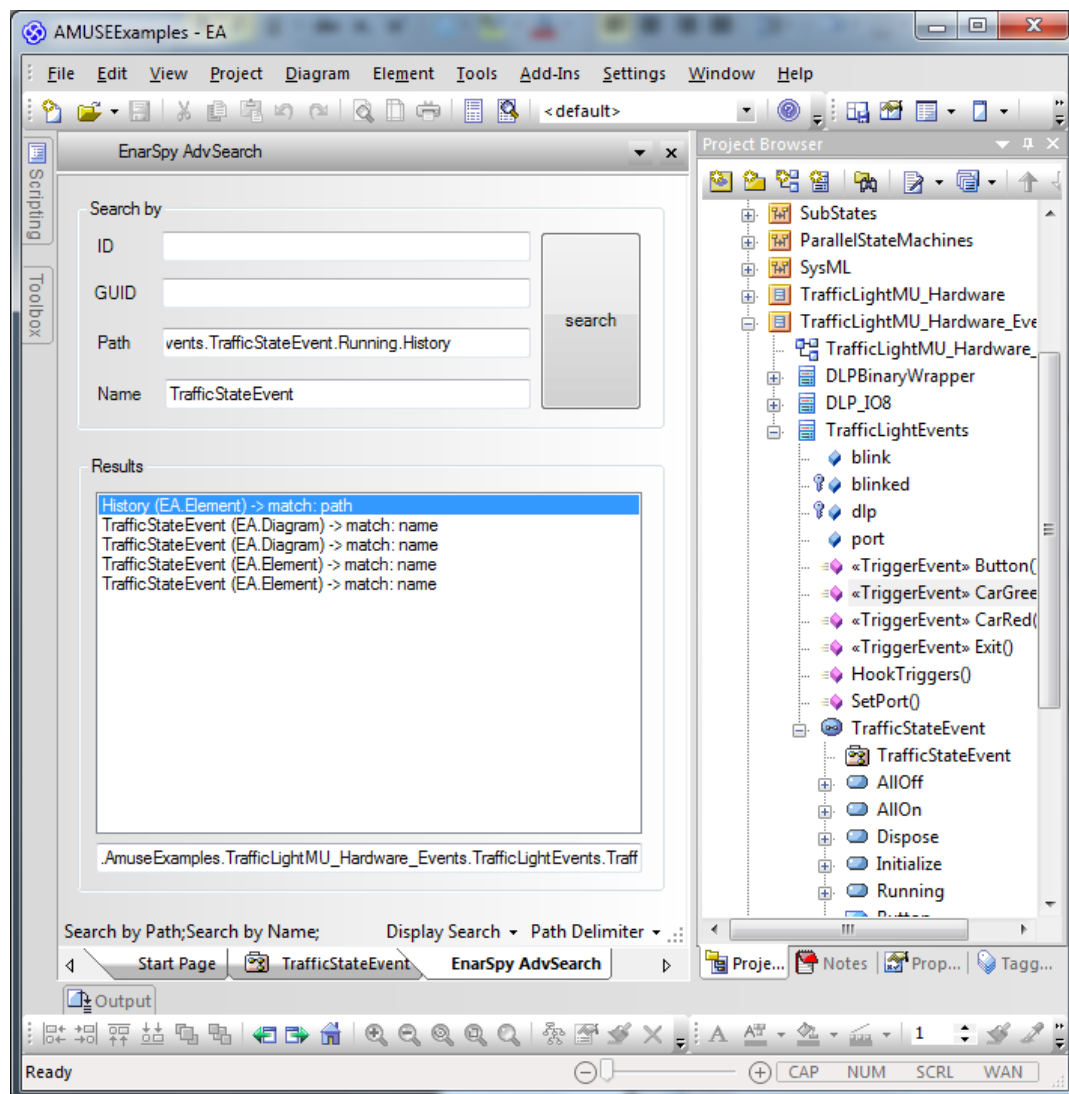
**NEW:** display table record not only for element and package, but for method, connector, attribute, diagram also

## 2.2 Advanced Search

Search by Id and/or Guid and/or Path and/or Name. Displays results in a list, and you can navigate to the element by double-click.

Search the model for attributes, connectors, diagrams, elements or packages.

This plugin is loaded as diagram:



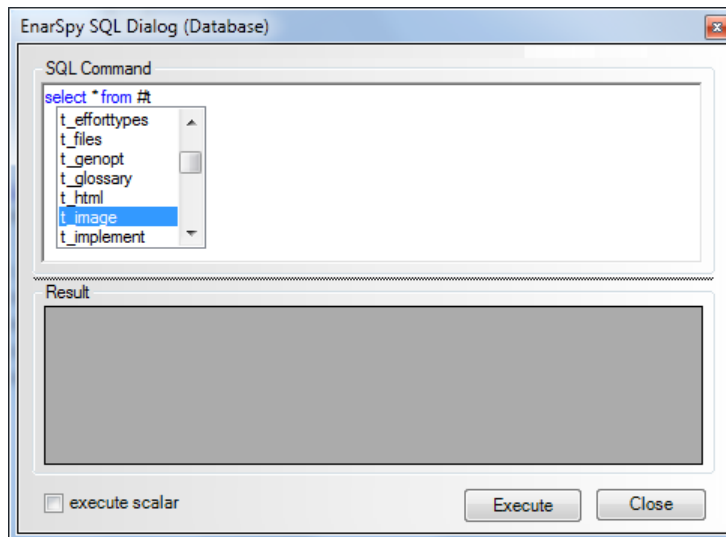
On the lower right corner you can find a button where you can choose weather to display the search as diagram or tab.

If you choose tab, you will find this control via EA-Menu View\Add-In Windows.

Changing the control's display style needs closing the current tab, and reopen it by Enar Spy menu.

## 2.3 Execute SQL

Execute any SQL on the database, using the repository's connection.



On SQL statements without Return Value, select "execute scalar" on bottom if the form.

**REMOVED:** Syntax-Highlighting (couple of SQL-reserved words and all known tables from EA are highlighted)

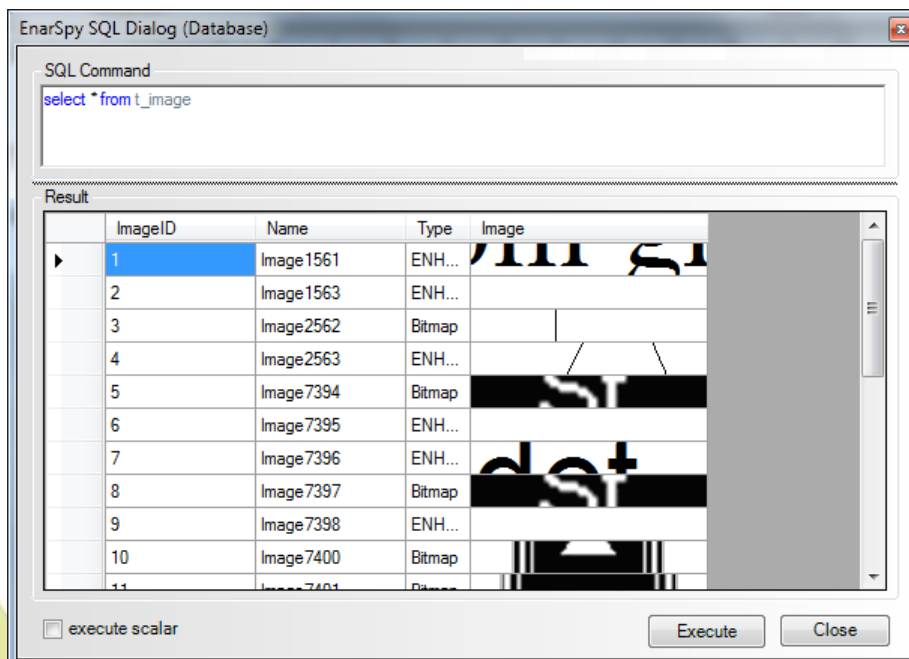
Reason: this was extremely buggy

**NEW:** intellisense.

This is a very self-made feature, and you have to open intellisense by typing #t

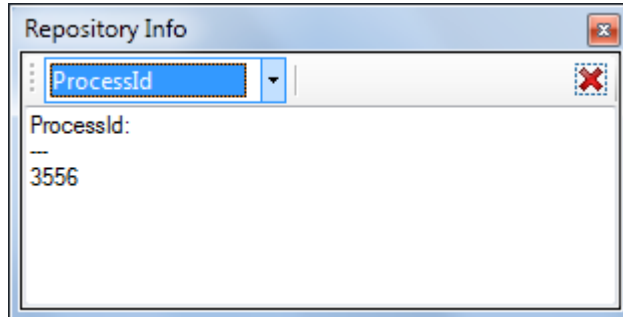
Use Up/Down for navigate, and <Space> or <Return> to accept the item on current position.

<Escape> closes intelliSense.



## 2.4 Repository info

Read a couple of Informations right from the current project's repository object.

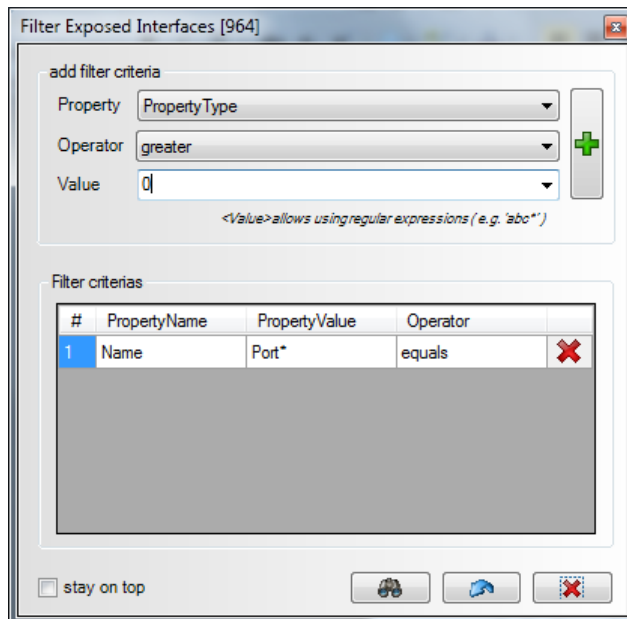


By now Informations are:

- ConnectionString
- EA Edition
- ProcessID
- EA Edition
- IsSecurityEnabled

## 2.5 Filtergram

This plugin allows you to filter the current Diagram for elements with specific properties. Matching elements get highlighted with red background.



The Value-Parameter supports Regular Expressions, so you might want to search e.g. in Name for:

Port\*           -> all Elements with Name starting with 'Port'

Po.t            -> all Element starting with 'Po', having any char, and ending with 't'

...

To add a new filterCriteria to the collection, select Property and Operator, enter the value to search for, and click the "Add" Button (the one with the green plus).  
To remove a criteria from collection, click the column having the red cross.

By now all criterias are connected by "AND". Probably an "OR" is coming up next.

Supported operators:

Equals           -> property text must match (regular expression or not)

Not\_Equals      -> property doesn't match

Greater          -> greather than (NUMERIC ONLY)

Smaller          -> smaller than (NUMERIC ONLY)

Not supported:

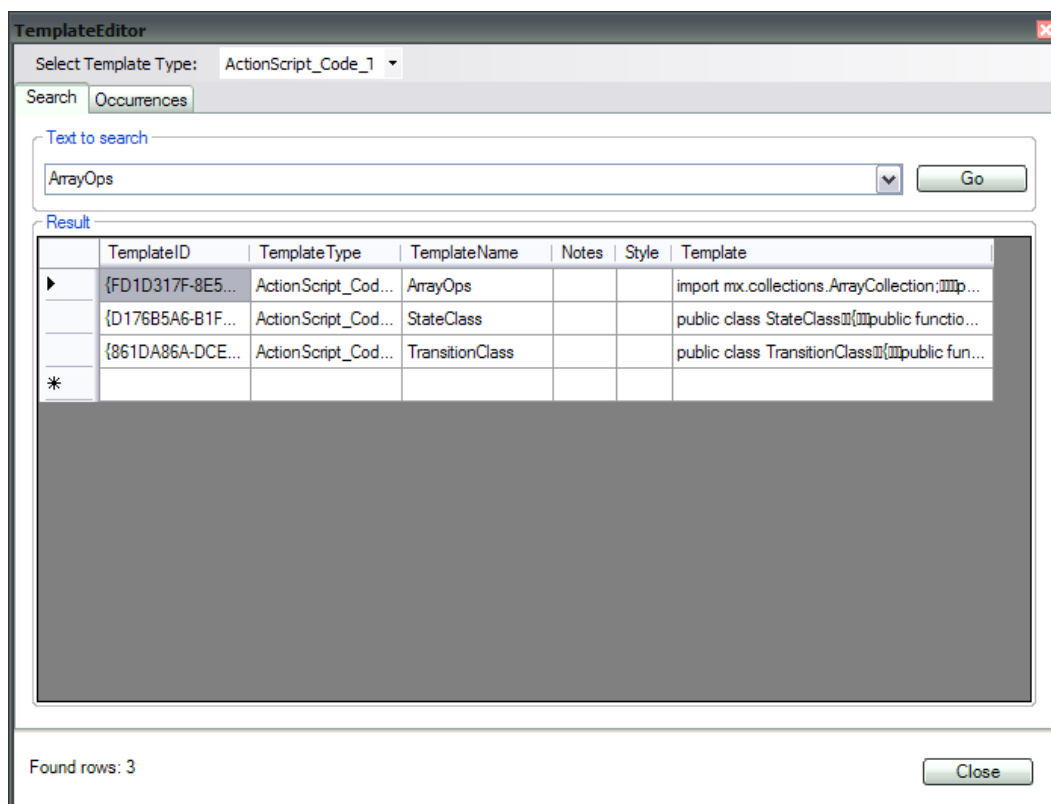
Collections (like Elements, Connectors, TaggedValues, ...)

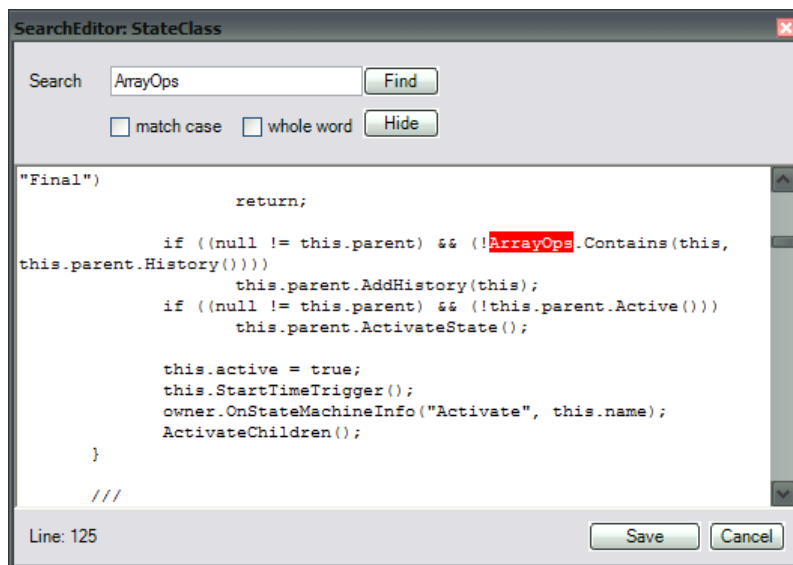
## 2.6 Disabled: ScriptPro

Is currently disabled. Reason: still I am unable to process unmodified code Templates. And therefore this plugin is useless, sorry!

It allows you to search inside the Code Generation Templates for any text, and it also displays a list of files not references by any other file.

Current limitation is: only modified files are shown. I will re-enable this feature as soon as standard (and not modified) code template files are included.





## 2.7 Traces

### 2.7.1 Remove version control

I get a lot of customer's projects having version control enabled. It gets boring quickly to manually remove all the packages from version control manually, just to get rid of the warning message at project startup: "Version control not configured. You want to configure it now?"

This plugin removes all version control settings from the model, and cannot be reverted!

**NEW:** finding packages uses now -1 AND +1 for search (just internal cosmetics)

### 2.7.2 Reset Styles

This one removes the style info of all objects in the current diagram.  
It cannot be reverted!

## ***2.8 Refresh***

Because EA doesn't offer a "refresh" function just for the current diagram or parts of the TreeView, but for the whole project only, this very minimalistic addin will do for you.

So will not have to reload the whole model just to update a simple package.

## 3 Additional tools in setup

These tools can also be found on <http://blog.lieberlieber.com>

### 3.1 eaCommand

Documentation of software projects

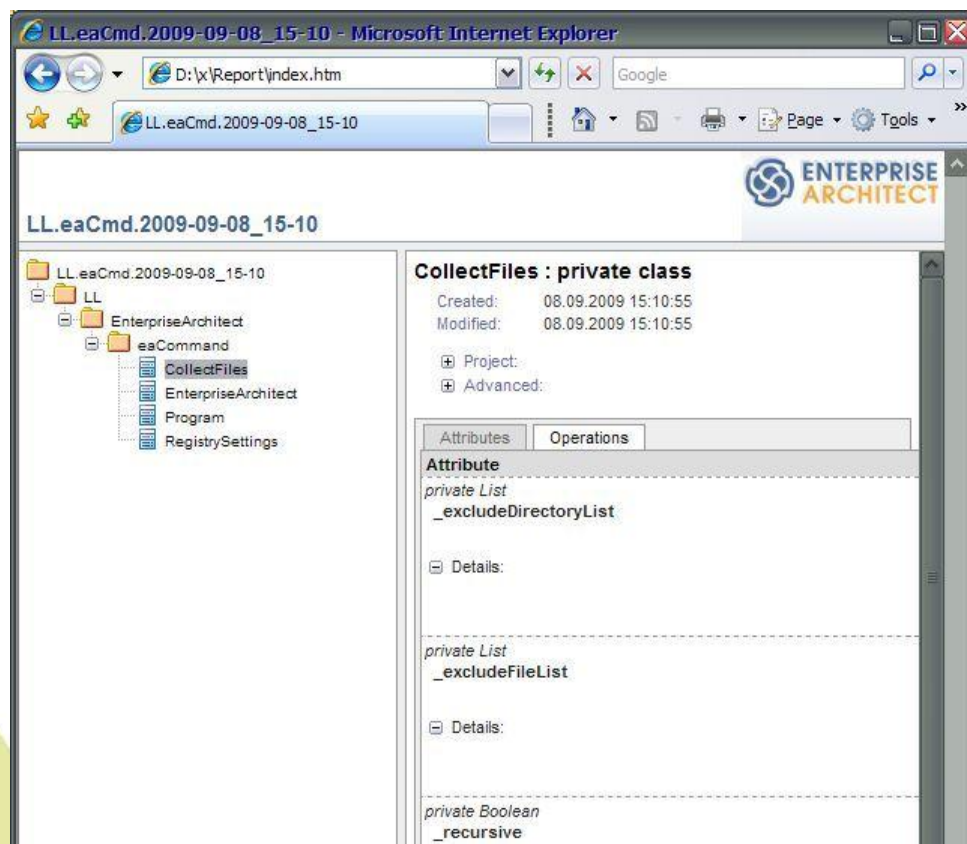
Documentation of existing software projects made easy by using Enterprise Architect. Whether the project exists as Source Code, .Net Assembly or .Java-Files.

Single files or whole directories can be imported into a (new) EA-Project via COM-Interface, and a HTML-Report is generated afterwards.

To ease things, LieberLieber has written a Command Line-Application to cover the whole workflow from importing files to generating the HTML-Report.

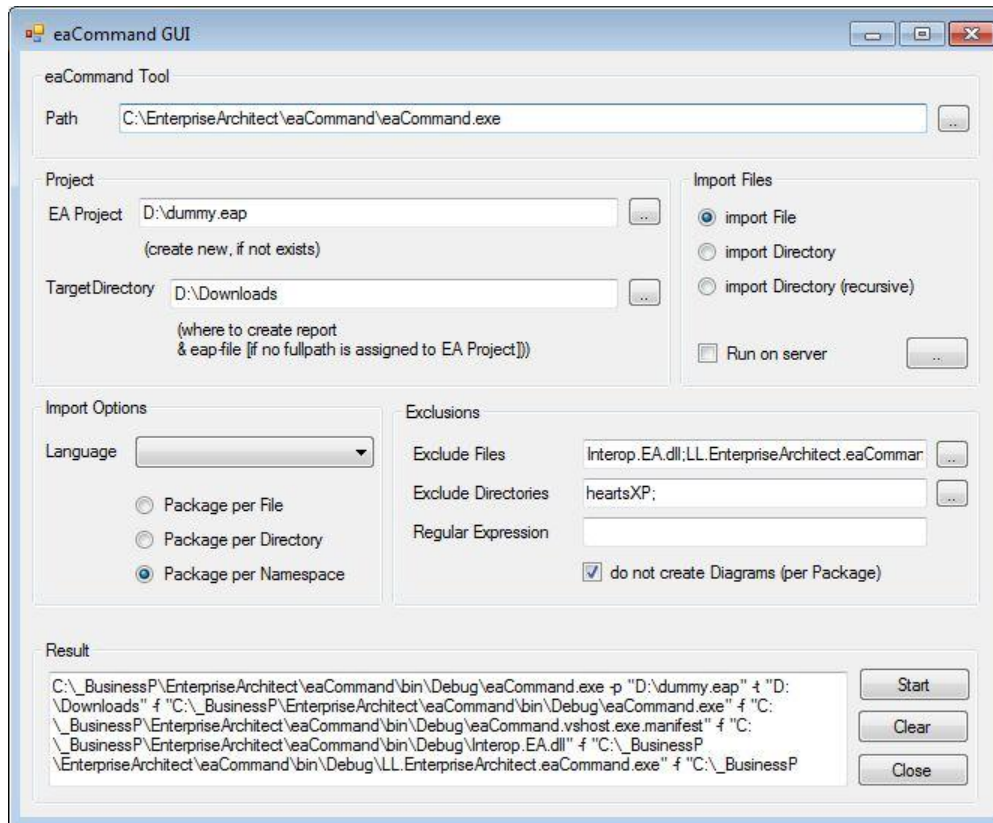
Only requirement is an installed version of Enterprise Architect on either a client or server machine.

See screenshot of the report after importing eaCommand-Assembly (C#) below:



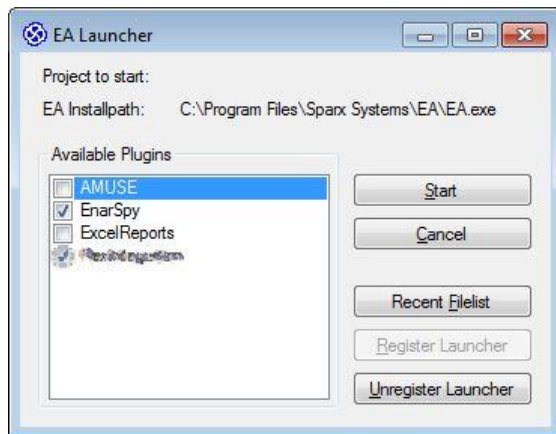
### 3.2 eaCommand GUI

Helps creating the command line arguments for eaCommand.



### 3.3 eaLauncher

If you have a couple of EA-Addins installed on your computer, and some of them interfere with others, you might want to disable some or all at project-startup.



This tool registers for EAP file extension and will popup, whenever a new EA-project is started.

To register for EAP: start eaLauncher, then click "Register Launcher" button.

To unregister: click "Unregister Launcher"

The "Recent File List" let's you edit the entries being displayed on EA Start Menu

Update: eaLauncher now supports Addins registered in the Local Machine hive, which is new for EA 9.0.

**Have a nice day,**

**maybe you want to visit us at**  
**<http://blog.lieberlieber.com>**